

# TWIN SPHERE RUBBER "QUICK HUBBED" & EPOXY COATED FEMALE THREADED UNION EXPANSION JOINT

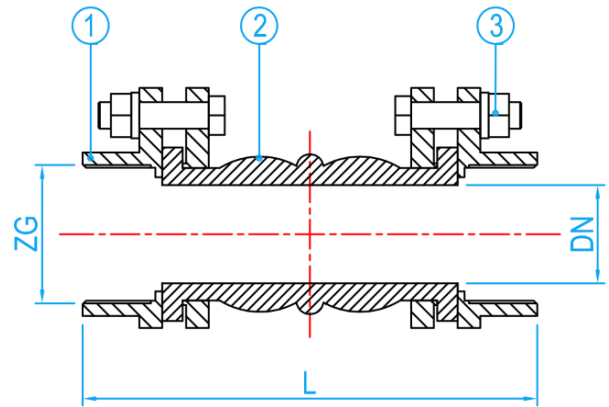
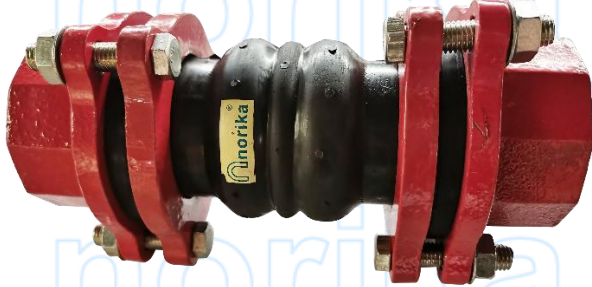
**RB RUBBER**  
FLEXIBLE PROTECTIVE

**ST STEEL**  
DURABLE TOUGH

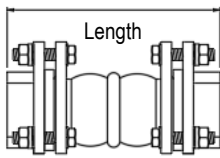
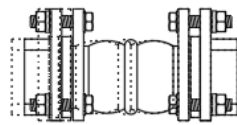
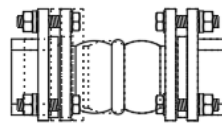
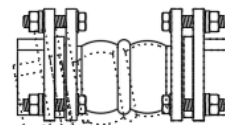
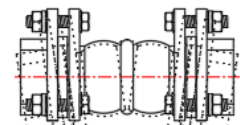
**MANUAL**

**RINSED**

**FI Thread**



CROSS SECTION VIEW


**L**  
 Length=Pipe flange spacing

**A**  
 Axial elongation

**B**  
 Axial compression

**C**  
 Lateral displacement

**D**  
 Angular deflection

## STANDARD SPECIFICATIONS

Nominal Pressure	PN16
Scaling Test Pressure	1.76Mpa
Strength Test Pressure	2.4Mpa
Operating Temperature	-5 ~ +85°C

## COMPONENT PARTS

ITEM	PARTS	MATERIAL
1	Type of metal	Cast Steel (Epoxy Coated)
2	Elastomer	EPDM
3	Bolt And Nut	Galvanized Steel

## DIMENSIONS

SKU	DN (mm)	ZG (inch)	L (mm)	A (mm)	B (mm)	C (mm)	D	WEIGHT (kg)	PCS/CTN
UEJN015	15	½" BSPT	200	5~6	22	22	45°	-	-
UEJN020	20	¾" BSPT	200	5~6	22	22	45°	0.950	10
UEJN025	25	1" BSPT	200	5~6	22	22	45°	1.170	10
UEJN035	32	1¼" BSPT	200	5~6	22	22	45°	1.405	10
UEJN042	40	1½" BSPT	200	5~6	22	22	45°	2.030	10
UEJN050	50	2" BSPT	200	5~6	22	22	45°	2.410	1
UEJN065	65	2½" BSPT	265	8~10	24	24	45°	3.745	1
UEJN080	80	3" BSPT	285	8~10	24	24	45°	-	-